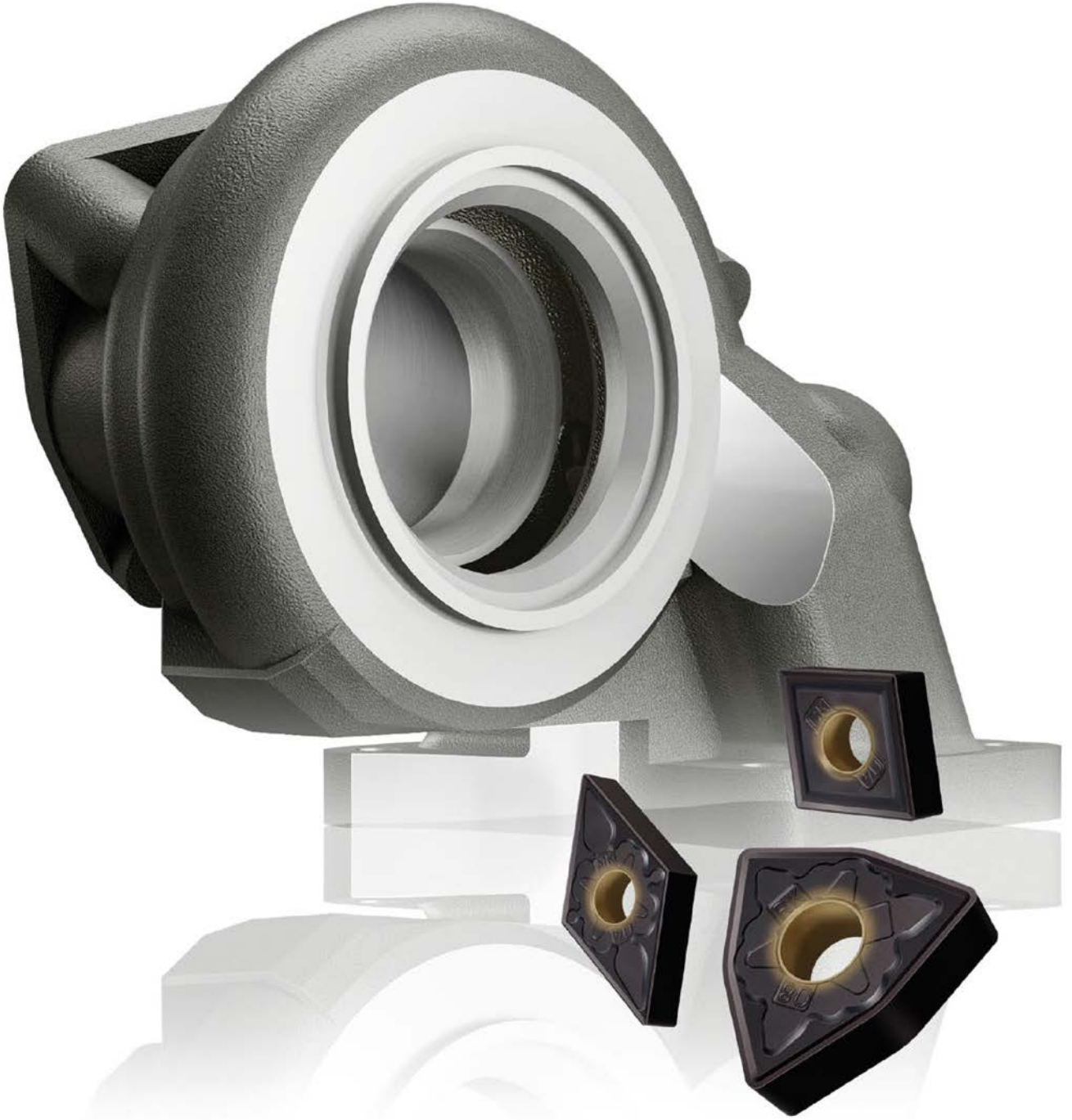


# MH515

DÖKÜM ÖSTENİTİK PASLANMAZ ÇELİK VE SFERO DÖKÜM  
TURBOŞARJ MUHAFAZALARI GİBİ BENZER PARÇALARI  
İŞLEMELİK İÇİN ÖZEL TASARLANDI

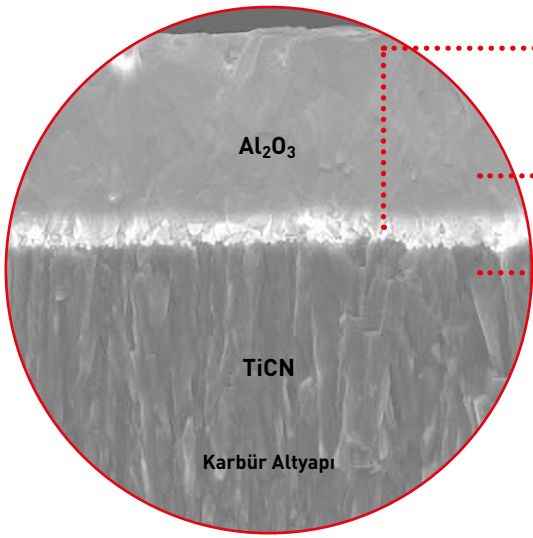


# MH515

## DÖKME ÖSTENİTİK PASLANMAZ ÇELİK VE DÜKTİL DÖKME DEMİR 'İN İŞLENMESİNDE GÜÇLENDİRİLMİŞ KENAR KOPMA DİRENCİ

### KAPLAMA ÖZELLİKLERİ

Özel teknoloji kaplama, karbür alt tabakaya yapışmayı büyük ölçüde iyileştirerek kesme kenarında plastik deformasyonu önler ve dolayısıyla takım ömrünü artırır.



#### GÜÇLÜ-BAĞLAMA TEKNOLOJİSİ

Kaplama katları arasındaki tutunma derecesi en üst seviyeye çıkarılmıştır. Bu, soyulmaya karşı oldukça dirençli toklaştırıcı bir etki yaratır.

#### NANO ÖZELLİKLİ KAPLAMA TEKNOLOJİSİ

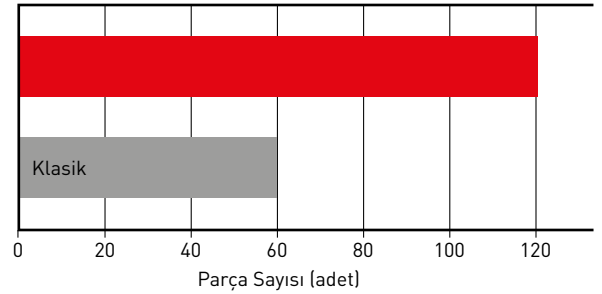
Optimize edilmiş kristal oluşum, Nano özellikli kaplama teknolojisi mükemmel aşınma ve kenar ufanma direnci oluşturur.

### KESME PERFORMANSI

#### TÜRBİN GÖVDESİ FLANŞININ DIŞ ÇAPININ İŞLENMESİ (ISIYA MUKAVEMETLİ DÖKME ÇELİK)

Üstün kaplama, iki kat takım ömrü sağlar.

Malzeme	Isiya dirençli dökme çelik
Kesici Uç	WNMG080412-00
Vc (m/dk)	130
f (mm/dev.)	0.25
ap (mm)	1.5
Soğutma	Islak kesme

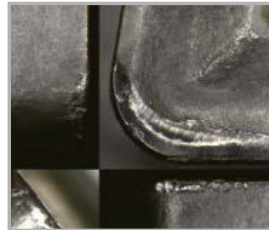


MH515+GK



120 Parça

Klasik



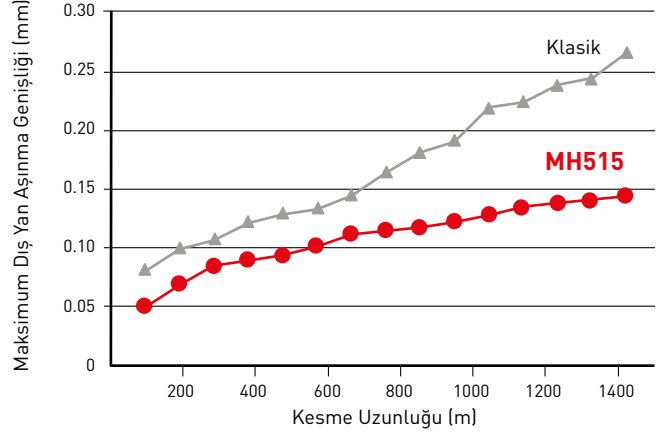
60 Parça

## KESME PERFORMANSI

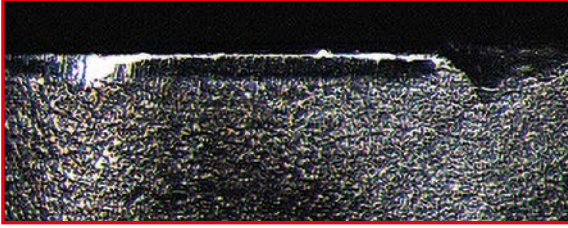
### OSTENİTİK DÖKME PASLANMAZ ÇELİK İÇİN DÜZ DARBESİZ TORNALAMA TESTİ

Plastik deformasyon nedeniyle kaplama tabakasının soyulması büyük ölçüde azaltılmıştır.

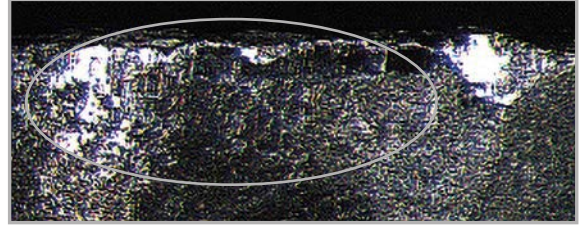
Malzeme	Ostenitik dökme paslanmaz çelik
Kesici Uç	WNMG080412-00
İşleme yöntemi	Düz devam eden alın
Vc (m/dk)	120
f (mm/dev.)	0.2
ap (mm)	2.0
Soğutma	Islak kesme



### 1425 M SONRA KESME KENARI



MH515

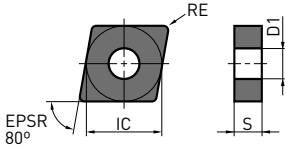
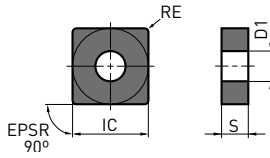
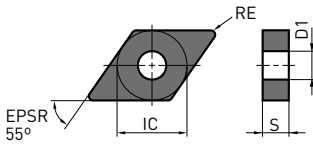


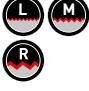
Klasik

Kaplamanın soyulmasından kaynaklanan hasar



# NEGATİF KESİCİ UÇLAR (DELİKLİ)

**M****K****M Sınıf****CNMG, CNMA****SNMG****DNMG****TALAŞ KIRICI TANIMI****UYGULAMA****LK****MA, GK,  
Standart****RK  
Üstü Düz**

Sipariş Numarası		MH515	IC	S	RE	D1
CNMG120408-LK	L	★	12.7	4.76	0.8	5.16
CNMG120412-LK	L	★	12.7	4.76	1.2	5.16
CNMG120408-MA	M	★	12.7	4.76	0.8	5.16
CNMG120412-MA	M	★	12.7	4.76	1.2	5.16
CNMG120408-GK	M	★	12.7	4.76	0.8	5.16
CNMG120412-GK	M	★	12.7	4.76	1.2	5.16
CNMG120408-RK	R	★	12.7	4.76	0.8	5.16
CNMG120412-RK	R	★	12.7	4.76	1.2	5.16
CNMA120408	R	★	12.7	4.76	0.8	5.16
CNMA120412	R	★	12.7	4.76	1.2	5.16
DNMG150404-LK	L	★	12.7	4.76	0.4	5.16
DNMG150404-GK	M	★	12.7	4.76	0.4	5.16
DNMG110408	M	★	9.525	4.76	0.8	3.81
SNMG120404-GK	M	★	12.7	4.76	0.4	5.16
SNMG120412-GK	M	★	12.7	4.76	1.2	5.16

7 

# NEGATİF KESİCİ UÇLAR

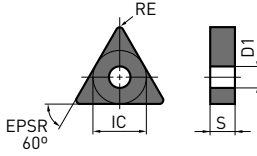
(DELİKLİ)

M

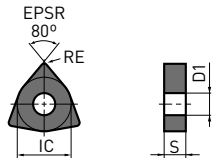
K

M Sınıf

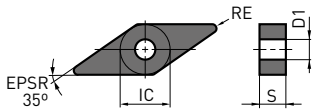
TNMG



WNMG



VNMG



TALAŞ KIRICI TANIMI

UYGULAMA



LK

GK, MK

RK

Sipariş Numarası



MH515

IC

S

RE

D1

TNMG160412-GK	M	★	9.525	4.76	1.2	3.81
VNMG160408-MK	M	★	9.525	4.76	0.8	3.81
WNMG080408-LK	L	★	12.7	4.76	0.8	5.16
WNMG080412-LK	L	★	12.7	4.76	1.2	5.16
WNMG080408-GK	M	★	12.7	4.76	0.8	5.16
WNMG080412-GK	M	★	12.7	4.76	1.2	5.16
WNMG080412-RK	R	★	12.7	4.76	1.2	5.16
WNMG080416-RK	R	★	12.7	4.76	1.6	5.16



# 7° POZİTİF KESİCİ UÇLAR

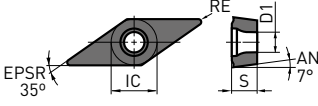
(DELİKLİ)

M

K

M Sınıf

VCMT, VCMW



TALAŞ KIRICI TANIMI

UYGULAMA



MK

Üstü Düz

Sipariş Numarası



MH515

IC

S

RE

D1

VCMT160404-MK

M

★

9.525

4.76

0.4

4.4

VCMW160408

R

★

9.525

4.76

0.8





4.4

# MH515

## ÖNERİLEN KESME ŞARTLARI

### NEGATİF KESİCİ UÇLAR

Kesme Koşulları : ●: Stabil Kesme ●: Genel Kesme ❖: Stabil Olmayan Kesme

Malzeme	Özellikleri	Koşullar	  		Vc	f	ap	
M	Ostenitik dökme paslanmaz çelik JIS SCH12, DIN 1.4826, DIN 1.4837	Ni ≤ 18 %	●	M	GK, MK	60-130	0.10-0.30	1.5-2.5
			●	R	RK *	60-130	0.10-0.30	1.5-2.5
S	Duktil Dökme Demir	Çekme Mukavemeti < 500 MPa	●	L	LK, MA	150-250	0.10-0.30	0.3-1.0
			●	M	MK, GK	150-250	0.10-0.35	0.3-2.5
		●	R	RK	150-250	0.15-0.35	1.0-2.5	
			L	LK, MA	130-230	0.10-0.20	0.3-1.0	
		●	M	MK, GK	130-230	0.10-0.30	0.3-2.5	
			●	R	RK	130-230	0.20-0.30	1.0-2.5

\* Düz Üst

**GERMANY**

MMC HARTMETALL GMBH  
Comeniusstr. 2 . 40670 Meerbusch  
Phone +49 2159 91890 . Fax +49 2159 918966  
Email admin@mmchg.de

**U.K.**

MMC HARDMETAL U.K. LTD.  
Mitsubishi House . Galena Close . Tamworth . Staffs. B77 4AS  
Phone +44 1827 312312 . Fax +44 1827 312314  
Email sales@mitsubishicarbide.co.uk

**SPAIN**

MITSUBISHI MATERIALS ESPAÑA, S.A.  
Calle Emperador 2 . 46136 Museros/Valencia  
Phone +34 96 1441711 . Fax +34 96 1443786  
Email comercial@mmevalencia.es

**FRANCE**

MMC METAL FRANCE S.A.R.L.  
6, Rue Jacques Monod . 91400 Orsay  
Phone +33 1 69 35 53 53 . Fax +33 1 69 35 53 50  
Email mmfsales@mmc-metal-france.fr

**POLAND**

MMC HARDMETAL POLAND SP. Z O.O  
Al. Armii Krajowej 61 . 50-541 Wrocław  
Phone +48 71335 1620 . Fax +48 71335 1621  
Email sales@mitsubishicarbide.com.pl

**RUSSIA**

MMC HARDMETAL 000 LTD.  
Electrozavodskaya St. 24 . build. 3 . Moscow . 107023  
Phone +7 495 725 58 85 . Fax +7 495 981 39 79  
Email info@mmc-carbide.ru

**ITALY**

MMC ITALIA S.R.L.  
Viale Certosa 144 . 20156 Milano  
Phone +39 0293 77031 . Fax +39 0293 589093  
Email info@mmc-italia.it

**TURKEY**

MMC HARTMETALL GMBH ALMANYA - İZMİR MERKEZ ŞUBESİ  
Adalet Mahallesi Anadolu Caddesi No: 41-1 . 15001 35580 Bayraklı /İzmir  
Phone +90 232 5015000 . Fax +90 232 5015007  
Email info@mmchg.com.tr

[www.mitsubishicarbide.com](http://www.mitsubishicarbide.com) | [www.mmc-hardmetal.com](http://www.mmc-hardmetal.com)


DAĞITICI:

□

□

L

┘

Sipariş Kodu: B219TR 

Yayın Tarihi: 2020.10 (-), Basım yeri Almanya